



587 635 5220
albertacardiology.ca

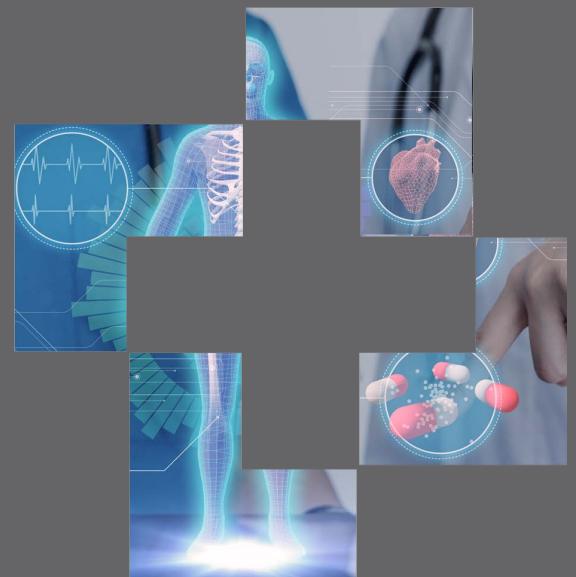
Unit 100, 4075 105 Street NW, Edmonton, Alberta T6J 7H3, Canada

Preventative Care For All Ages

About Us

Our Clinic is providing integrated medical specialty , consultation, diagnostic services, and rehabilitation to the region. As an integrated group practice. we provide comprehensive care for Cardiology, Internal Medicine and Respiriology.

- ➔ CARDIOLOGY
- ➔ INTERNAL MEDICINE
- ➔ RESPIROLOGY



Our Clinic

We operate on two floors of our facility is 6,000 sq. ft. state of the art facility has been designed to put your need first. We are proud to offer:

- ➔ CLINIC EXAMINATION ROOM
- ➔ DIAGNOSTIC LAB
- ➔ ON-SITE PHARMACY (Coming soon)
- ➔ PFT Lab (Coming soon)

Our Advantage

- ➔ Shorter WaitList
- ➔ Local Specialists
No traveling to larger centers for treatment
- ➔ We emphasize your unique health and wellness needs
- ➔ Tests & services covered by Alberta Health
(Patients need a referral from their family doctor. Walk-in service not available.)

Cardiac Stress Testing

A stress test, shows how your heart functions during physical activity. This test can reveal problems with blood flow within your heart.

During the test your heart rhythm, blood pressure and breathing are monitored. Or you'll receive a drug that mimics the effects of exercise.

Your doctor may recommend a test with imaging, such as a nuclear stress test (MPI) or echocardiographic stress test, if an exercise stress test doesn't pinpoint the cause of your symptoms.

Myocardial Perfusion Imaging Test

Myocardial perfusion imaging (MPI) is a non-invasive imaging test that shows how well blood flows through (perfuses) your heart muscle. It can show areas of the heart muscle that aren't getting enough blood flow. This test is often called a nuclear stress test. It can also show how well the heart muscle is pumping.

MPI & CARDIAC STRESS TESTS CAN HELP YOUR DOCTOR:

- Find out if there are narrowing or blockages in your coronary (heart) arteries if you have chest discomfort
- If you have heart damage from a heart attack if your heart is not working normally
- Determine if you should undergo a coronary angiogram
- Decide whether you would benefit from coronary stent or bypass surgery to treat your chest discomfort or help an abnormal pumping function go back to normal
- If a heart procedure you had to improve blood flow (stent, bypass) is working
- How well your heart can handle physical activity

Echocardiogram (Ultrasound of the Heart)

An echocardiogram is a test that uses ultrasound to show how your heart muscle and valves are working. The sound waves make moving pictures of your heart so your doctor can get a good look at its size and shape.

ECHOCARDIOGRAM CAN HELP YOUR DOCTOR:

- Look for heart disease
- Monitor heart valve disease over time
- See how well medical or surgical treatments are working

Blood Pressure & Holter Monitoring

A Holter monitor is a small, wearable device that keeps track of your heart rhythm; recording all of your heartbeats.

A Holter monitor test is usually performed after a traditional test to check your heart rhythm (electrocardiogram), especially if the electrocardiogram doesn't give your doctor enough information about your heart's condition.



CAROTID DOPPLER

Safe and pain less test that create pictures of carotid arteries in the neck. It can help to identify blockages or narrowing of the arteries, which can increase the risk of stroke.

CAROTID DOPPLER CAN HELP YOUR DOCTOR

Identify blockages or narrowing of the arteries
Allow early treatment to prevent serious complications.